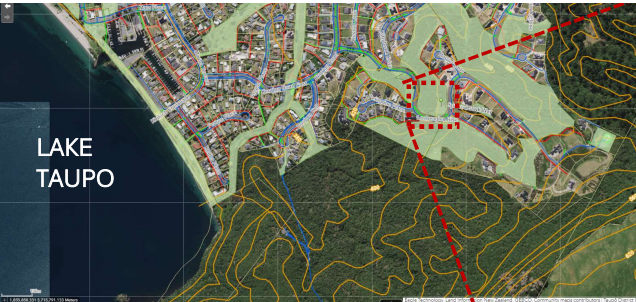


Kinloch

Low Zone Reservoir



General discussion



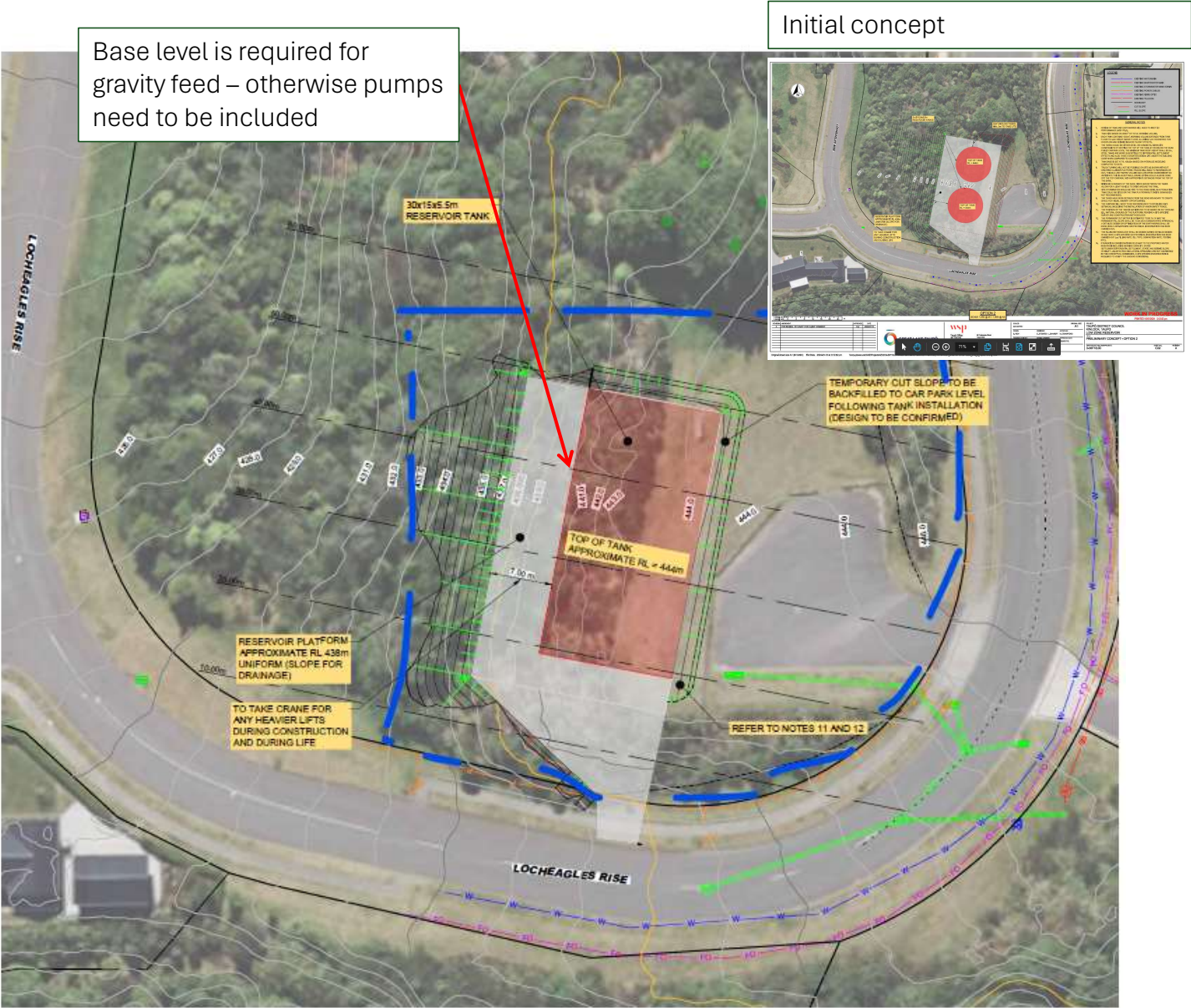
General observations of the visual impact of this project.
Retaining approach system – possible impacts on the carpark area. address as required opportunity to upgrade the carpark surface.

- Public space opportunities:
- tell the water origin story
 - acknowledge mana whenua
 - Use the design language of the water treatment plant in Taupo to get some district wide consistency.

Track impacts

Reserve opportunities:
improve the amenity and site experience via planting and improved lookout experience – the original purpose of vesting this reserve land with council.

Consideration of the required construction laydown areas and the impact of these on the existing site.



Views into the site

Key:

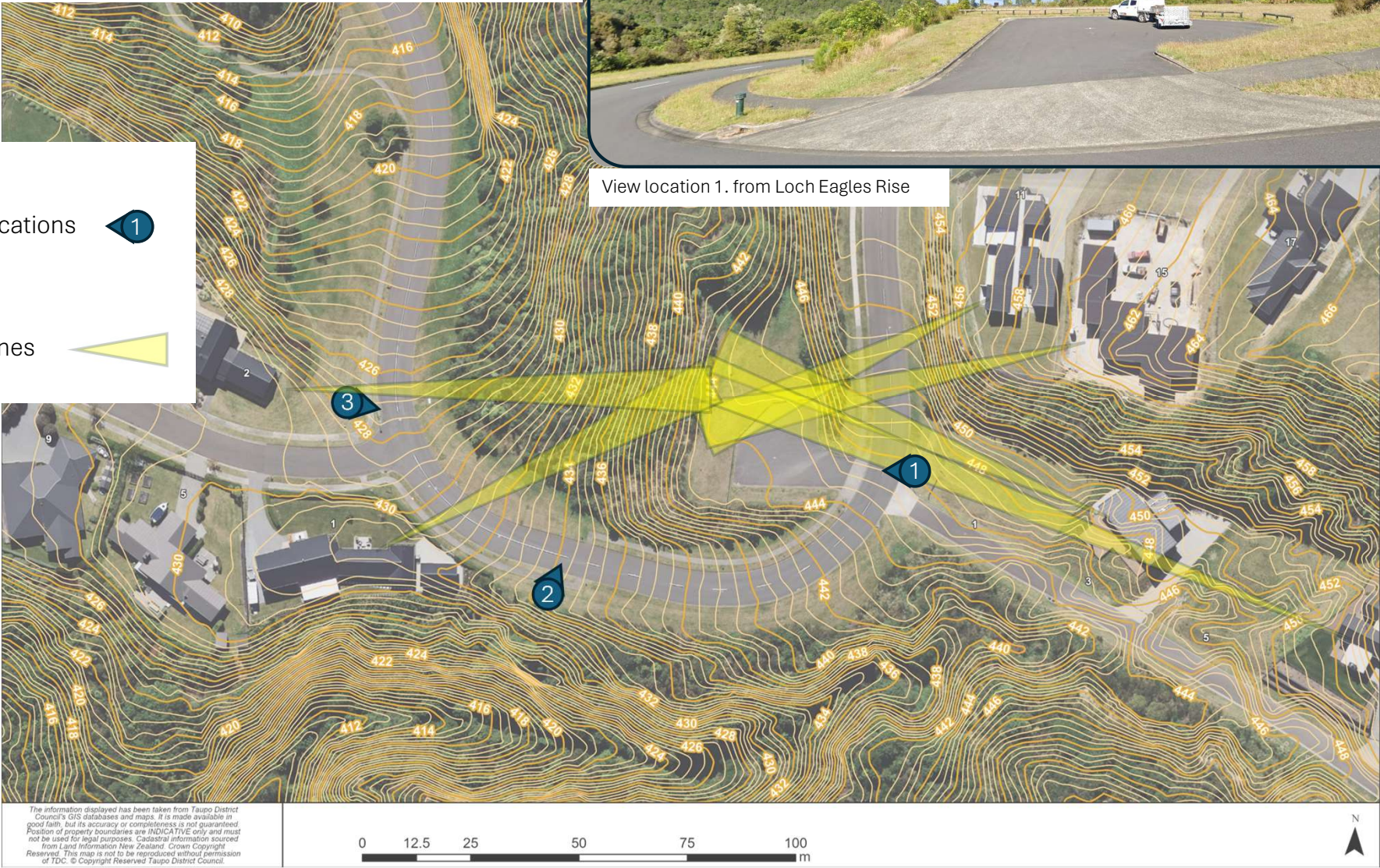
View review locations



View impact lines
of sight



View location 1. from Loch Eagles Rise



Photomontage



View location 1. from Loch Eagles Rise



1 View location 1

Photomontage



2 View 2
location 1



Potential cladding and
paint to mitigate the
visual impacts

Photomontage

Potential cladding and
paint to mitigate the
visual impacts



3

View location 3
location A

Views out of the site

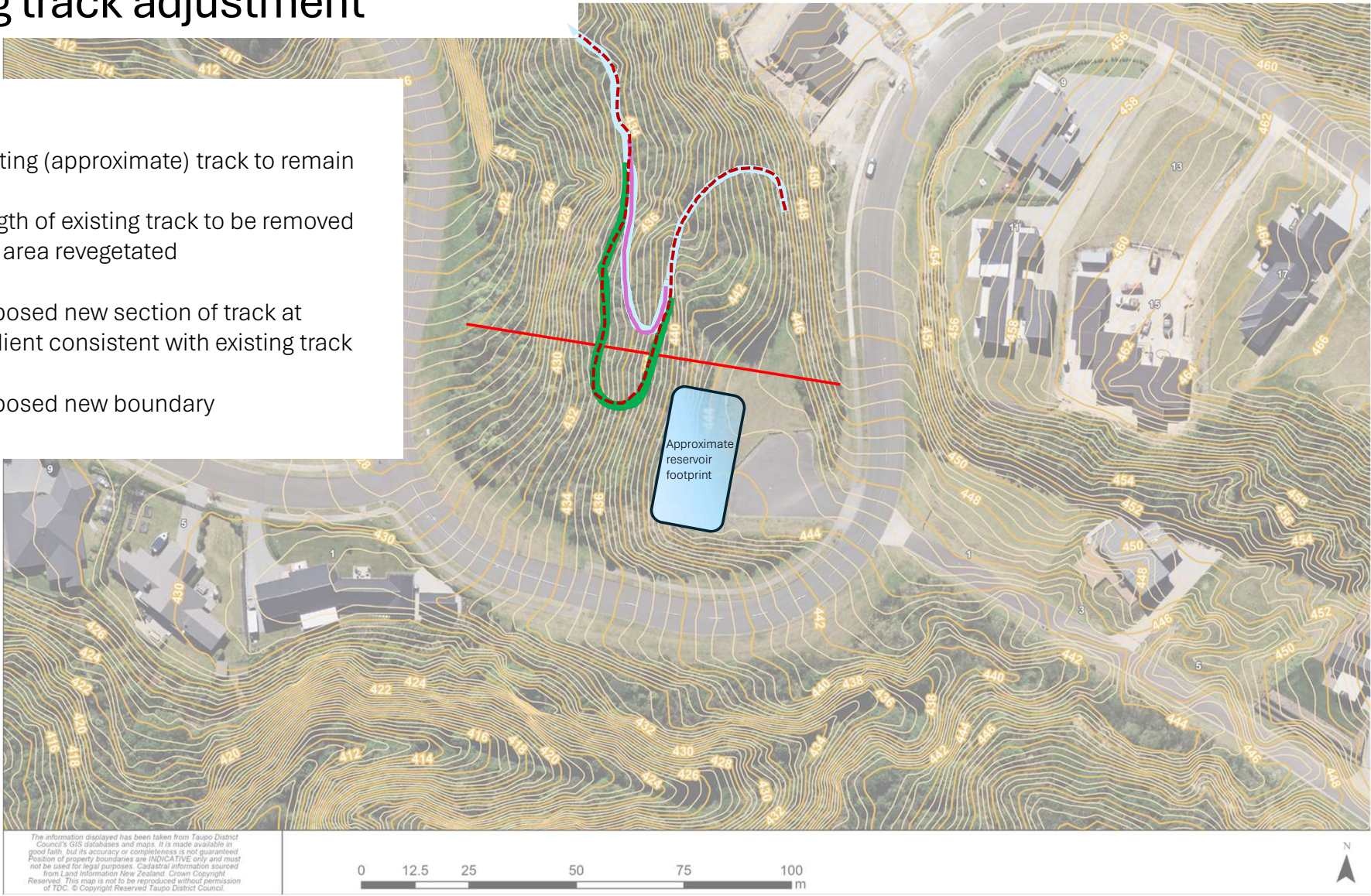
Key:

Views out of the site



Walking track adjustment

- Key:
- Existing (approximate) track to remain
 - Length of existing track to be removed and area revegetated
 - Proposed new section of track at gradient consistent with existing track
 - Proposed new boundary



Views out of the site

